

HOUSE BEAUTIFUL

BUILDING

PLANTING

FURNISHING

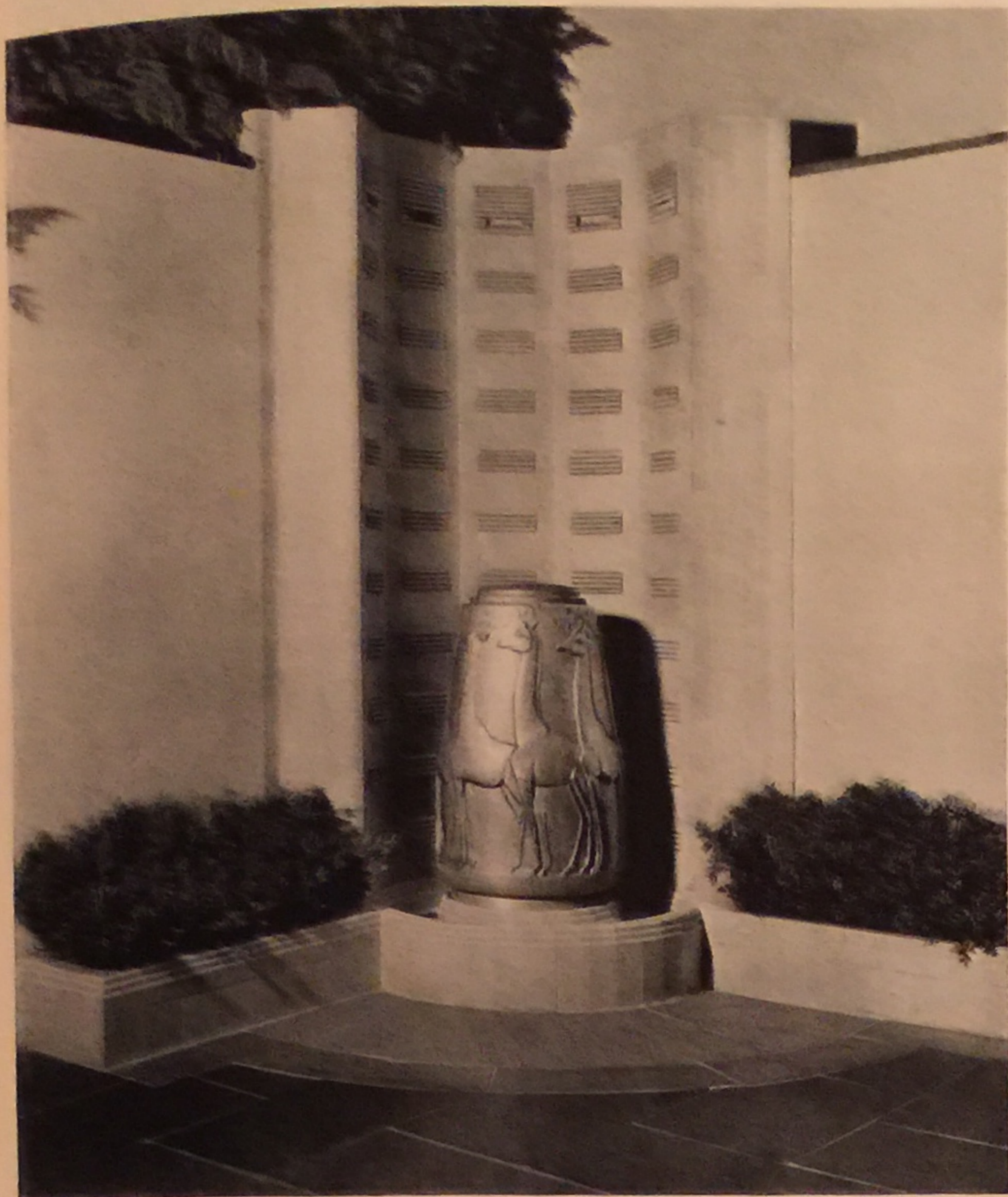


35 cents
\$3.00 a year

Extra in this issue
16-page PORTFOLIO of SMALL HOUSES - May 1929

THE EXPOSITION of CONTEMPORARY AMERICAN DESIGN

at the
METROPOLITAN
MUSEUM
of
ART

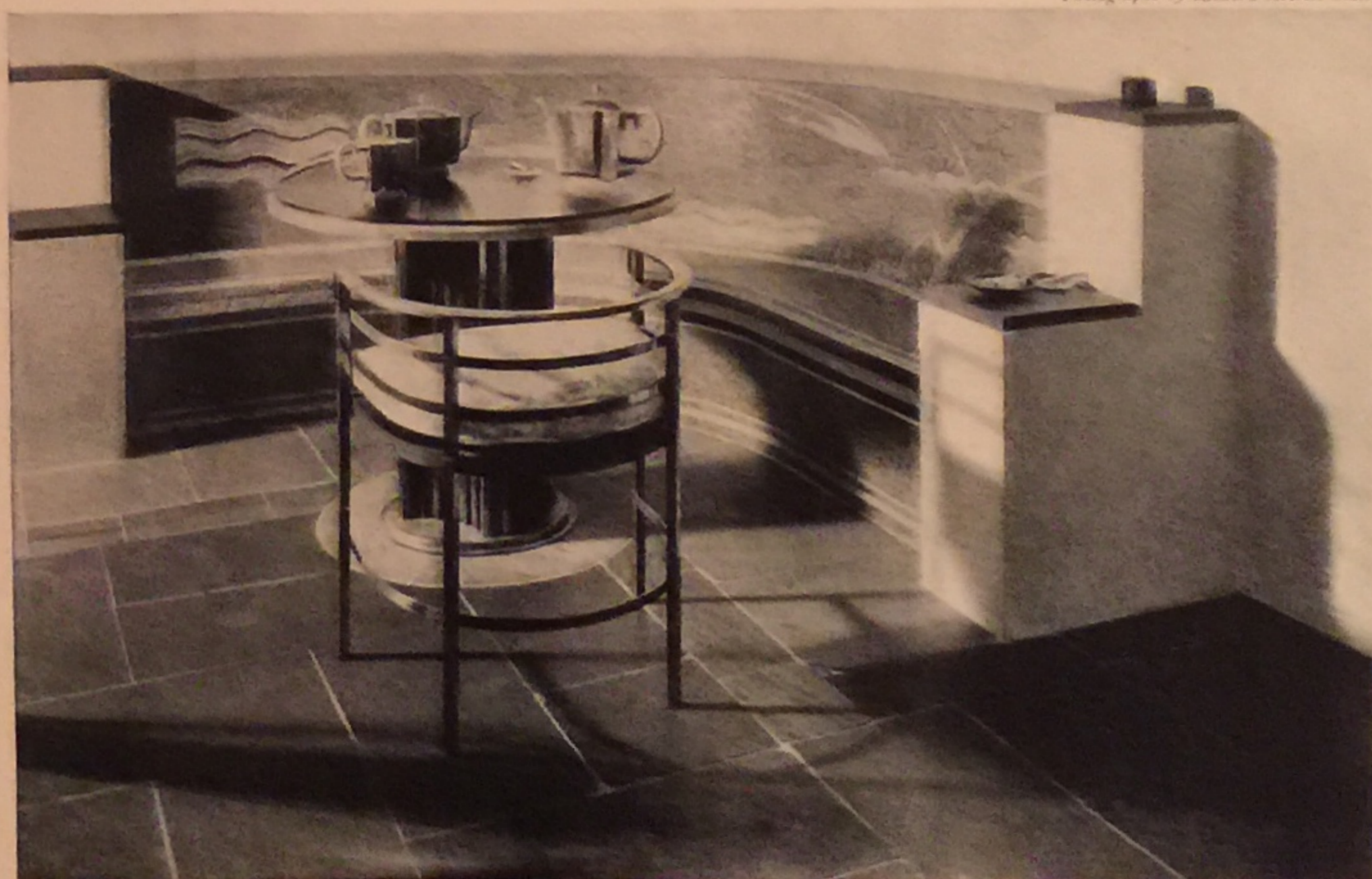


THE ILLUSTRATIONS show two corners of a back-yard garden. In the upper view is a fountain of soft salmon-pink glazed tile, from openings in the top of which water drops to the basin below, falling over an exquisitely designed piece of metal sculpture the color of polished steel. In the lower view is a seat of blue and white mosaics with stationary table containing a handsome silver tea and coffee service, and most successful metal chair with a cushion that repeats the pink of the tile fountain. The wall is of natural-color stucco with black slate coping; the paving is of smooth black slate with gray border and is laid with narrow joints

Photographs by Richard Averill Smith

BACK-YARD GARDEN

Designed by
ELY JACQUES KAHN



AN EXECUTIVE'S OFFICE

Designed by
RAYMOND M. HOOD

So satisfying is this ensemble that one concludes immediately that however one may feel about modern furniture in the home, in the office it is entirely appropriate. The desk and chairs of aluminum, brass studded and upholstered with pigskin, seem perfectly adapted to their purpose; the pouter lamp and lighting fixture entirely appropriate and of beautiful design; and the brown and tan hanging of separate strips operating horizontally on the principle of the Venetian blind, sufficiently masculine to fit into the schema. The walls are covered with fabrikoid of greenish-chamois color, and the rug of geometric design has sand, tan, henna, pink, and violet colors. The window is opaque with an etched design



CONSERVATORY

Designed by
JOSEPH URBAN

The triangle motive is used throughout in the design of this inviting conservatory. Transparent, opaque, and etched glass is used for the walls and ceiling; the wall fountain is of colored mosaics; the furniture metal with chair upholstered in putty-color fabrikoid. The background colors are gray and putty, which make an excellent foil for the bright magenta flowers and yellow mimosa



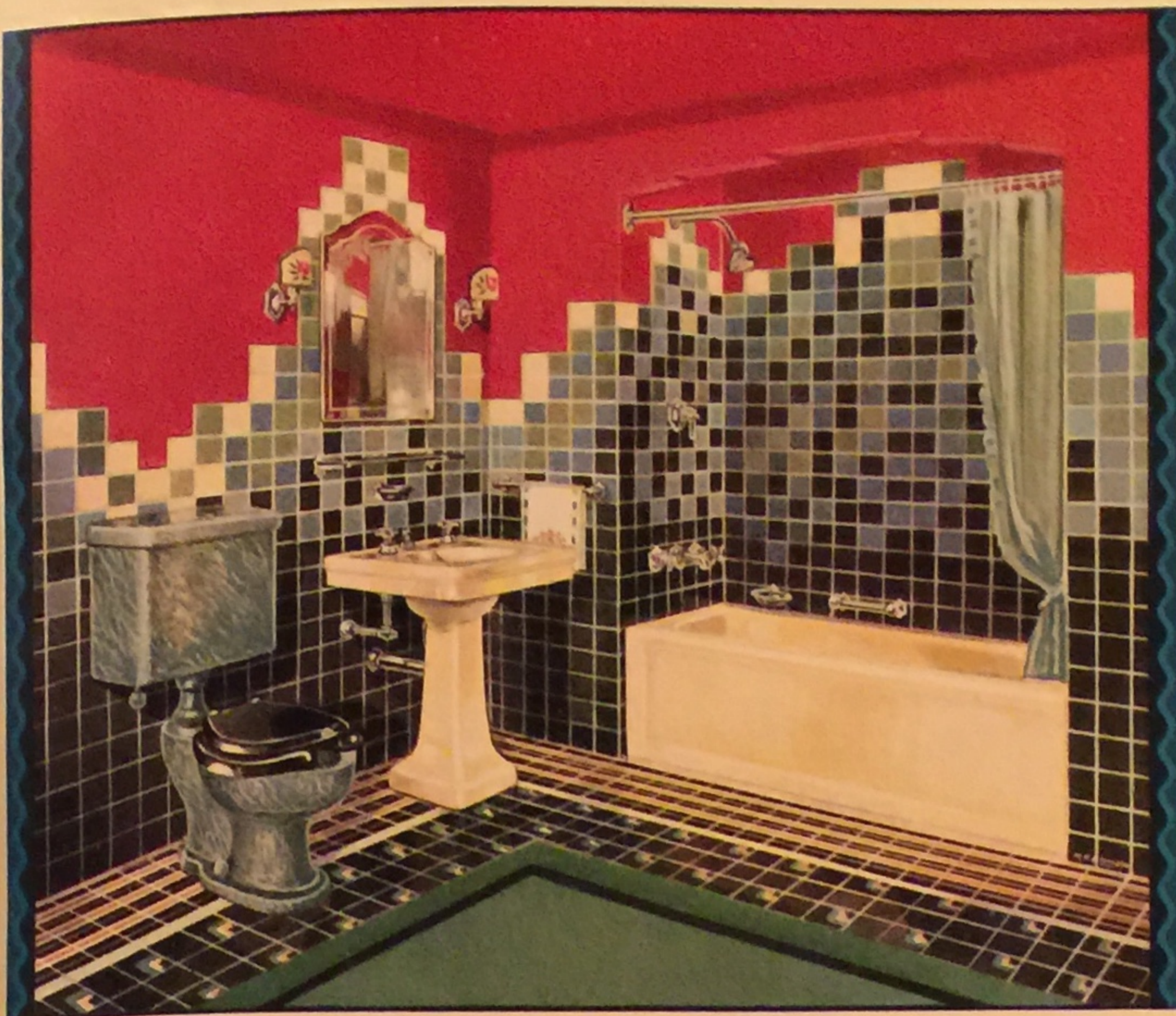
BATH AND DRESSING-ROOM

Designed by
ELY JACQUES KAHN

A black lavatory; black tub; walls of black glass, pinkish-brown dull tile, and of glazed pink tile in the tub recess; a floor of pinkish-tan rubber tile and border of small glazed black tiles, at once give character to this room. In addition, the details, especially of the dressing end, are worthy of study — the cabinets with black glass shelves filled with dainty under things giving color through the glass doors, and opaque black glass doors above and below with highly polished metal trim and beautiful handles; the metal grilles concealing the radiators with flat bar in front for towels; and the variously disposed shelves, on which are pink frosted glass bottles. Lastly, observe that the lighting is all indirect — bars of light at the lavatory and dressing table and glass panels concealing lights over the tub



COLOR in Te-pe-co Bathrooms



Our Guarantee

The Trenton Potteries Company makes but one grade of ware—the best that we can produce—and sells it at reasonable prices. We sell no seconds or culls. Our ware is guaranteed to be equal in quality and durability to any sanitary ware made in the world. The TE-PE-CO trade mark is found on all goods manufactured by this Company and is your guarantee that you have received that for which you have paid.

A copy of "Bathrooms of Character" Edition B—together with color chart showing the various tints and grainings of Te-pe-co ware, will be forwarded upon receipt of 10c in postage.

STRIKING in originality, this bathroom vibrates with the spirit of modern art. The pleasing variation in the color of its appointments and decorative scheme, is evidence of how greater interest, beauty and cheerfulness may be obtained by the artistic blending or contrasting of several harmonious colors. A marked departure from the conventional form of decorative scheme, it is an excellent

example of how various colors may be employed in the creation of beautiful bathrooms.

In delicate tints that blend delightfully with whatever color effect you may desire, Te-pe-co Vitreous China and Porcelain Plumbing Fixtures afford the utmost in beauty and sanitation. Whatever Te-pe-co color you may prefer carries the same guarantee of quality and durability.

THE TRENTON POTTERIES COMPANY

Trenton, New Jersey, U. S. A.

National Exhibit Rooms
101 Park Ave., New York City
Entrance on 41st Street

Sales offices in
Philadelphia, Boston
and San Francisco

Export Office: 115 Broad St., New York City

TE-PE-CO
ALL CLAY PLUMBING FIXTURES



"This Waitex Summer Rug

*has brightened my home
more than anything else
—and at small cost too"*

NO quicker way on earth to brighten and freshen the home atmosphere than with a Waitex Summer Rug. Without a stroke of redecoration, its cheerful, modernistic design will bring the breath of springtime indoors, and create a welcome gayety to greet every guest.

Waitex—an exclusive, patented fabric—offers a glorious canvas for the finest patterns and color schemes in the new art. It has a scuffle-proof, non-absorbent surface of tough Kraft fibre, a cushiony interior of American wire grass. The romping of children, the tramp of sport shoes, grass stains, cigarette ashes and grit do not damage this ideal summer rug. It is dirt-resisting, cleanable and lies flat, while its oil painted patented patterns do not fade.

Colorful designs that make your heart leap—\$13.85 for a 6 x 9

Waitex rugs this year possess the full glory of modern art—yet the designs will properly fit into conservative, as well as modernistic, backgrounds. Here is your chance, at the cost of one dozen American Beauties, to enjoy a cheerful, modernistic showpiece which will bring new interest to your home this summer.

Send for a free Waite folder and see all of the new designs in natural color photographs. Your dealer can supply you and we will gladly tell you the name of the nearest one. Clip the coupon below.

Waite Carpet Company, Oshkosh, Wisconsin

WAITE CARPET CO.—Dept HB Oshkosh, Wisconsin
Please mail me a free catalog of Waite Summer
Rugs, Braided Canvas Ovals and Wool-Waite Ovals.

Name _____

Street _____ City _____ State _____



Rug No. 71904 Black Illustrated—Design Patent Applied For



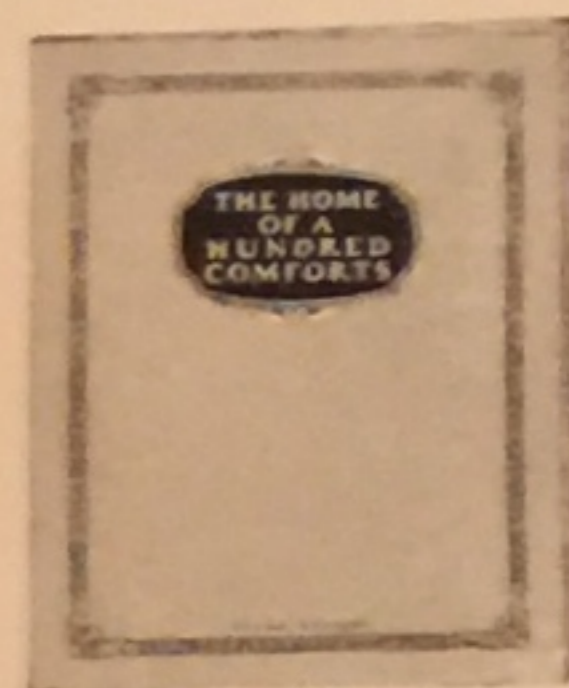
Make your kitchen a comfortable workshop... *wire it wisely*

YOUR kitchen should have a standard overhead light, of course, but it should also have additional fixtures to light your sink and your range. It should have an outlet for the fan or ventilator that will keep it fresh and cool, for your electric refrigerator, for your iron, for your electric clock.

If there is a back porch, you should be able to light it from within. If there is a breakfast nook, there must be an outlet for a percolator and a toaster. If you have a supply closet, it should have a light. These little

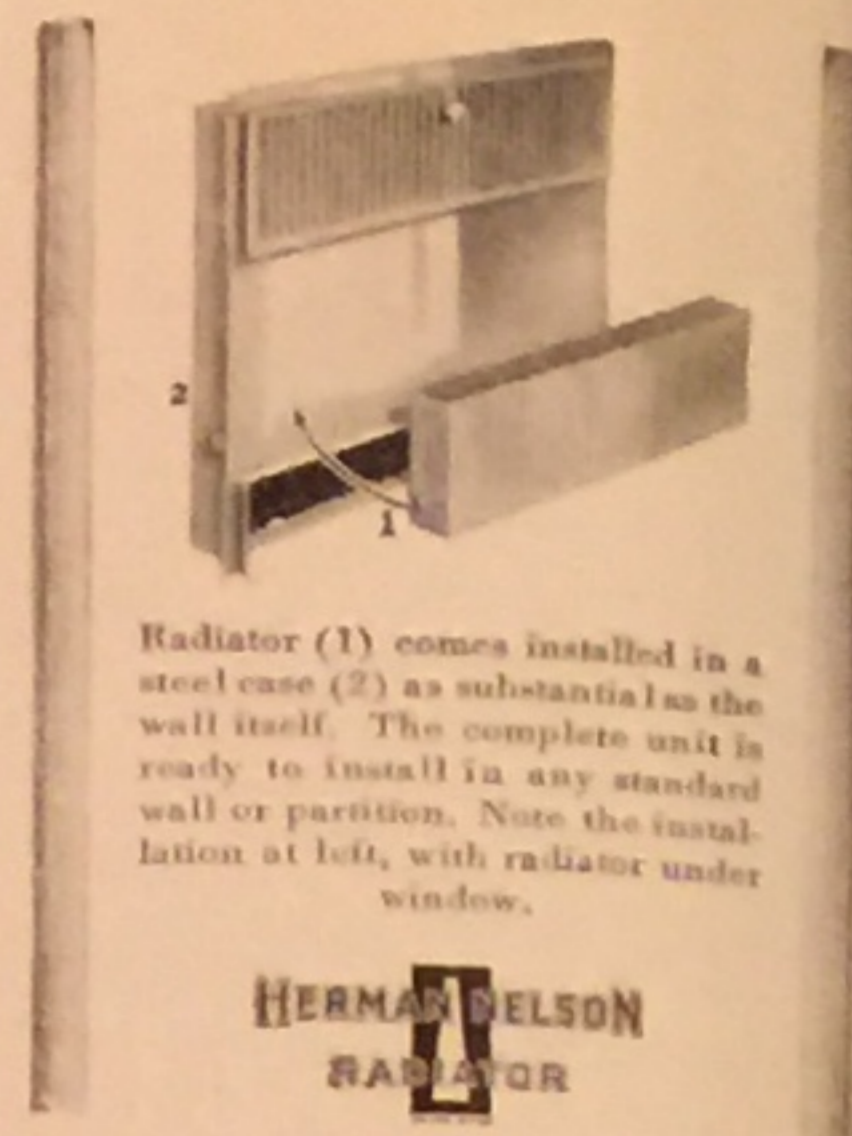
conveniences that mean so much can easily be yours if you have a General Electric Wiring System. It provides for them all—and for any other ideas which you may have. And it gives you *only* General Electric materials, inside your walls and out—a guarantee of long and satisfactory service.

ABOUT YOUR HOME—You can make it the ideal place you wish it to be for \$1.00 or \$2.00 a week. Consult your local Building and Loan Association. They will gladly show you the way to arrange the finances for you. Copyright, 1929. Better Relations Commission of the United States League of Local Building and Loan Associations.



Whether you are building a new home, or rejuvenating an old one, you should plan your wiring with foresight and care. Write to Section W-105 for a helpful booklet.

GENERAL ELECTRIC WIRING SYSTEM



Radiator (1) comes installed in a steel case (2) as substantial as the wall itself. The complete unit is ready to install in any standard wall or partition. Note the installation at left, with radiator under window.

RADIATORS in the wall . . .

the key to modern simplicity

How perfectly the Herman Nelson Invisible Radiator fits into the modern plan! Permanently sealed behind plastered wall or partition, it offers every advantage of finest radiator heat, yet not a single inch of it protrudes into the room . . . you are free to place your furniture precisely where you want it, free to really carry out your color schemes.

The Herman Nelson Invisible Radiator—a small, compact heating element—is enclosed

in a sturdy steel cabinet, which fits in any standard wall or partition. It has no brazed, welded or soldered joints to fail and leak steam or water. Once installed it is forever undemanding of attention or repair.

In fine homes, apartments and offices everywhere, Herman Nelson Invisible Radiators are superseding the space-taking type of heating unit. If you can afford them, you cannot afford to be without them. The coupon brings you complete information.

THE HERMAN NELSON CORPORATION, MOLINE, ILLINOIS
Builders of Successful Heating and Ventilating Equipment Exclusively for Over 20 Years

Sales and Service

BELFAST, ME.	WASHINGTON, D. C.	CLEVELAND	MILWAUKEE	MEMPHIS	SPokane
BOSTON	SCRANTON	COLUMBUS	GREEN BAY	LOUISVILLE	PORTLAND
PROVIDENCE	PITTSBURGH	CINCINNATI	MINNEAPOLIS	DALLAS	SEATTLE
NEW YORK CITY	CHARLOTTE, N. C.	TOLEDO	DULUTH	OMAHA	SAN FRANCISCO
UTICA	GRAND RAPIDS	INDIANAPOLIS	ST. LOUIS	EMPORIA	VANCOUVER
BUFFALO	SAGINAW	CHICAGO	BIRMINGHAM	KANSAS CITY	TORONTO
PHILADELPHIA	FLINT	DES MOINES	ATLANTA	DENVER	WINNIPEG, MAN.
	DETROIT			SALT LAKE CITY	

HERMAN NELSON *Invisible* RADIATOR

For Steam, Hot Water, Vapor or Vacuum Heating

THE HERMAN NELSON CORPORATION
 Moline, Illinois

Please send me the illustrated book Number 31. I am planning to build a _____ containing approximately _____ rooms.

Name _____

Address _____